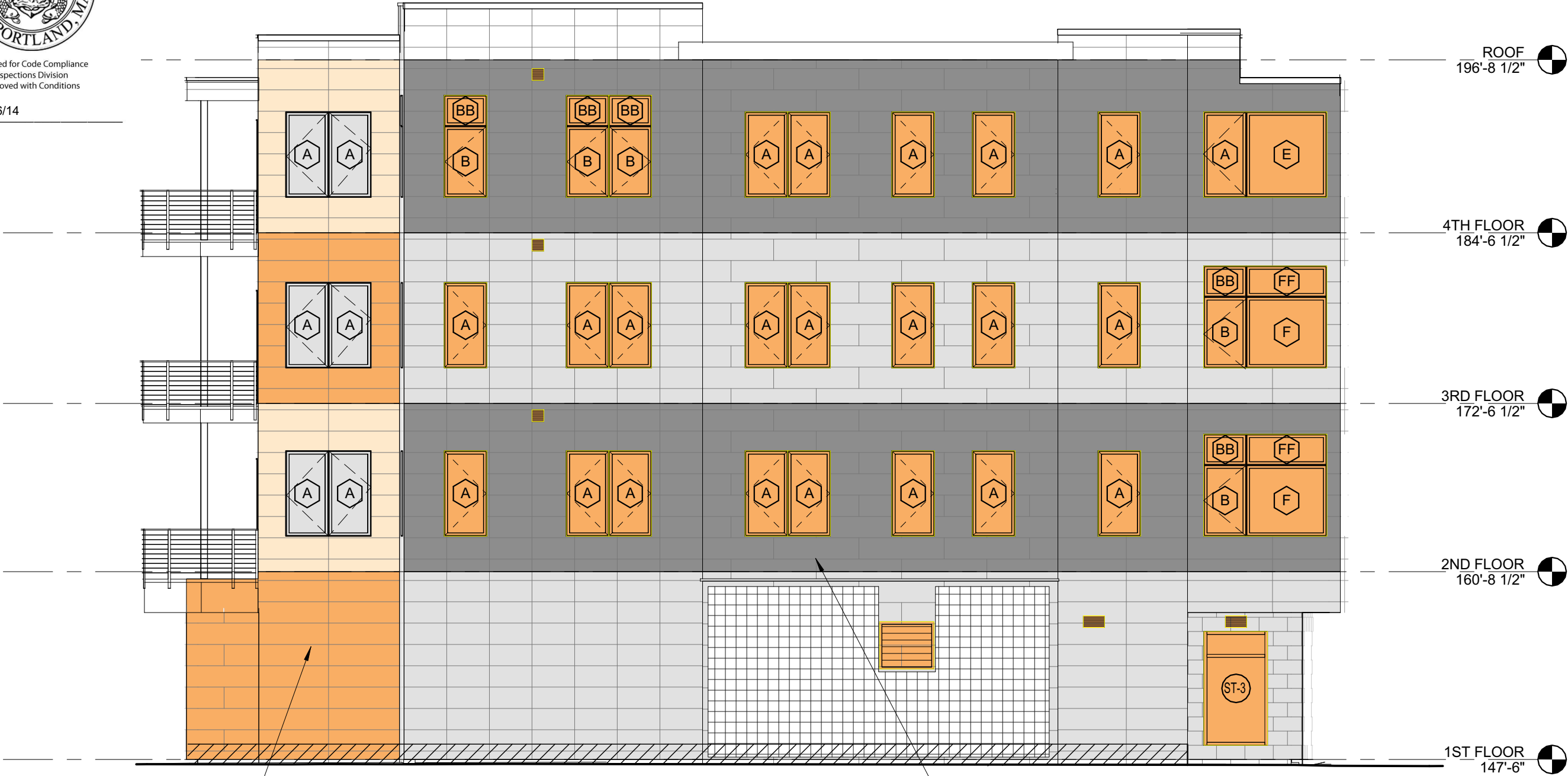




Reviewed for Code Compliance  
Inspections Division  
Approved with Conditions

Date: 05/16/14



**2009 INTERNATIONAL BUILDING CODE - TABLE 705.8**  
ORANGE SHADED WALL IS 19 FEET OFF THE PROPERTY LINE, PER TABLE 705.8 75% OF WALL AREA CAN BE OPENINGS, PER STORY UNDER FULL NFPA 13 (SPRINKLERED).  
PROPOSED EAST WALL:  
1ST FLOOR: WALL = 195 SF    OPENINGS = 0 SF → 0%  
2ND FLOOR: WALL = 118 SF    OPENINGS = 36 SF → 31%  
3RD FLOOR: WALL = 119 SF    OPENINGS = 36 SF → 30%  
4TH FLOOR: WALL = 121 SF    OPENINGS = 36 SF → 30%

**2009 INTERNATIONAL BUILDING CODE - TABLE 705.8**  
GRAY SHADED WALL IS 10 FEET OFF THE PROPERTY LINE, PER TABLE 705.8 45% OF WALL AREA CAN BE OPENINGS, PER STORY UNDER FULL NFPA 13 (SPRINKLERED).  
PROPOSED EAST WALL:  
1ST FLOOR: WALL = 842 SF    OPENINGS = 49 SF → 6%  
2ND FLOOR: WALL = 779 SF    OPENINGS = 206 SF → 26%  
3RD FLOOR: WALL = 790 SF    OPENINGS = 206 SF → 26%  
4TH FLOOR: WALL = 793 SF    OPENINGS = 207 SF → 26%

MAXIMUM AREA OF EXTERIOR WALL OPENINGS  
CALCULATIONS - EAST ELEVATION

Architect:  
**ARCHETYPE**  
architects  
48 Union Wharf Portland, Maine 04101  
(207) 772-6022 Fax (207) 772-4056

Date: 14 MAY 2014    Scale: 1/8" = 1'-0"

EAST ELEVATION -  
OPENING  
CALCULATIONS

Project: 118 ON MUNJOY HILL

118 CONGRESS STREET PORTLAND, MAINE

SK.00-1